



Columbia County Digital Divide Data

Table of Contents:

- Data on Computer & Internet Use in Columbia County
- Data on Internet Service Providers (ISP) in Columbia County
- Demographic Data

Data on Computer & Internet Use in Columbia County

	New York	Columbia County
Households with a computer	89.6%	89.5%
...with a desktop or laptop	78.5%	78.5%
...with a smartphone	78.4%	75.8%
...with a tablet or portable wireless computer	59.2%	58.9%
...with other	4.3%	5.9%
Households with a broadband internet subscription	82.8%	79.7%
...cellular data plan	63.5%	59.1%
...broadband such as cable, fiber optic, or DSL	72.6%	64.8%
...Satellite	3.6%	7.4%
...dial-up alone	0.3%	0.8%
...other service alone	0.1%	0.1%

Source: <https://www.census.gov/acs/www/data/data-tables-and-tools/narrative-profiles/2019/>

Internet Subscriptions: US, New York, and Columbia County

This data is only available at the Census **tract** level. [About the data...](#)

Detailed View

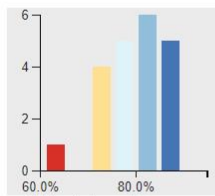
Households reporting...	US	New York	Columbia County
With an Internet subscription	83.0% ± 0.1%	83.2% ± 0.1%	80.5% ± 1.6%
With a Broadband subscription	82.7% ± 0.1%	82.8% ± 0.1%	79.7% ± 1.7%
Wireline (e.g. DSL, cable, or fiber) service	68.9% ± 0.2%	72.6% ± 0.2%	64.8% ± 1.9%
Wireline alone	17.5%	21.5% ± 0.1%	22.6% ± 1.8%
Cellular	66.3% ± 0.2%	63.5% ± 0.2%	59.1% ± 1.9%
Cellular data plan alone	10.0% ± 0.1%	8.3% ± 0.1%	7.7% ± 0.9%
Satellite Internet service	6.3% ± 0.1%	3.6% ± 0.1%	7.4% ± 1.0%
Satellite Internet alone	1.1%	0.6%	1.8% ± 0.5%
Other Service	0.2%	0.2%	0.1%
Dial-up service alone	0.4% ± 0.1%	0.3% ± 0.1%	0.8% ± 0.3%
Without an Internet subscription	17.0% ± 0.1%	16.8% ± 0.1%	19.5% ± 1.6%
Have access, but without a subscription	3.0%	2.9%	3.0% ± 0.7%
No Internet access	13.9%	13.9%	16.6% ± 1.6%

Internet Subscription Rates: With a Broadband subscription

This data is only available at the Census **tract** level.

[About the data...](#)

With a Broadband subscription

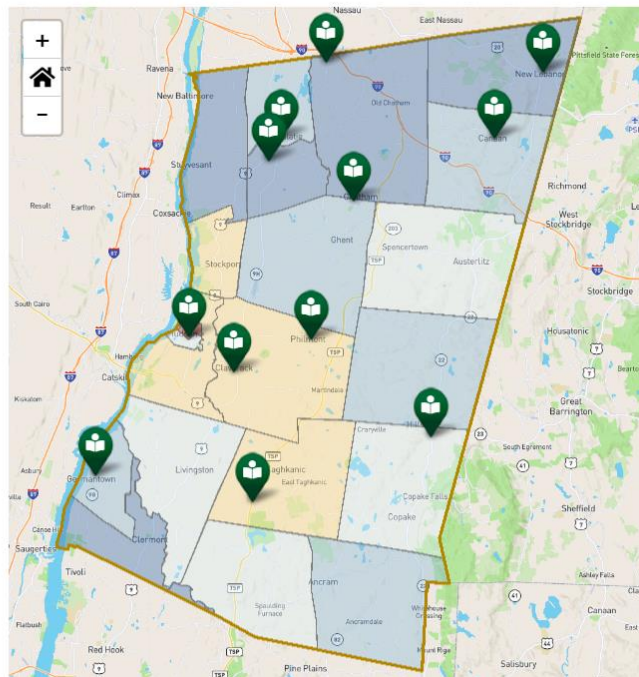


With broadband subscription

- 61.4% to 66.2%
- 66.2% to 71.0%
- 71.0% to 75.8%
- 75.8% to 80.7%
- 80.7% to 85.5%
- 85.5% to 90.3%

21 tracts have data.
Range: 61.4% - 90.3%

Show additional demographics



Computing Devices in the Home: Summary

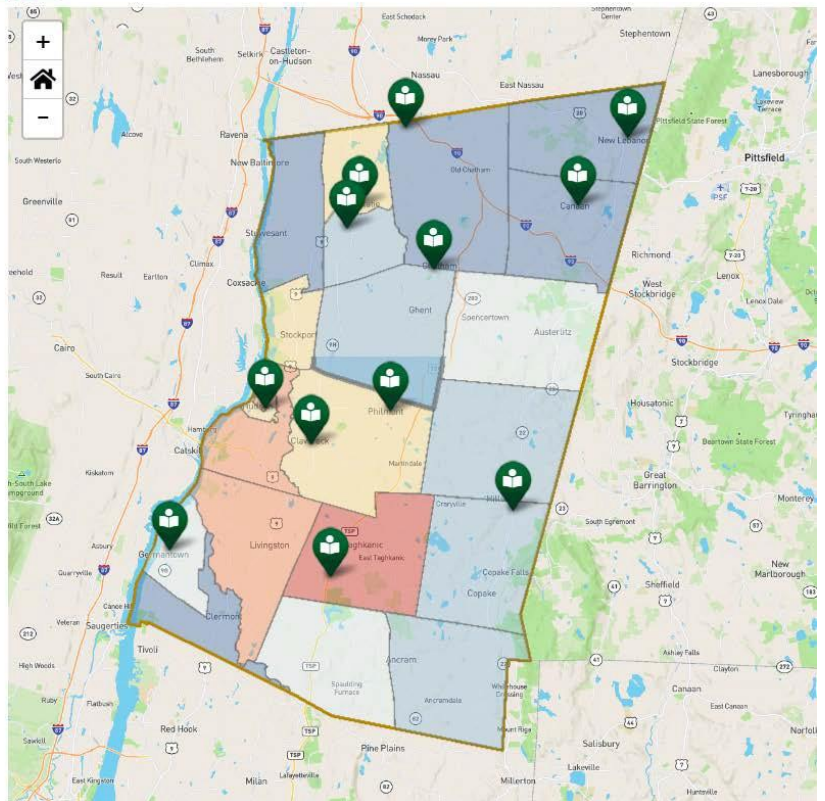
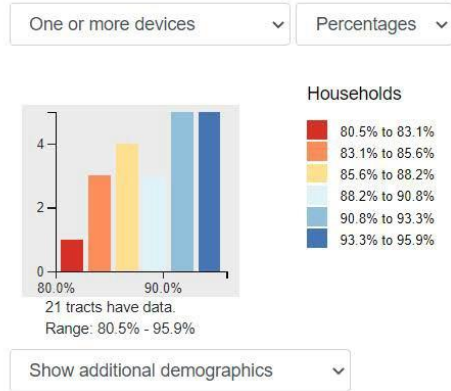
This data is only available at the Census **tract** level. [About the data...](#)

Percentages Formatted CSV

Households reporting...	US	New York	Columbia County
Households with one or more computing devices (total)	90.3% ± 0.1%	89.6% ± 0.1%	89.5% ± 1.1%
Desktop or Laptop (total)	77.8% ± 0.2%	78.5% ± 0.2%	78.5% ± 1.5%
Desktop or Laptop, with no other type of computing device	6.6% ± 0.1%	7.2% ± 0.1%	7.9% ± 0.8%
Smart Phone (total)	79.9% ± 0.1%	78.4% ± 0.1%	75.8% ± 1.5%
Smart Phone, with no other type of computing device	7.0% ± 0.1%	5.9% ± 0.1%	5.5% ± 0.9%
Tablet (total)	59.6% ± 0.2%	59.2% ± 0.2%	58.9% ± 1.7%
Tablet, with no other type of computing device	0.9% ± 0.1%	1.0% ± 0.1%	1.3% ± 0.5%
Other computer (total)	3.6% ± 0.1%	4.3% ± 0.1%	5.9% ± 1.0%
Other computer, with no other type of computing device	0.1% ± 0.1%	0.1% ± 0.1%	0.1% ± 0.1%
Without a computer	9.7% ± 0.1%	10.4% ± 0.1%	10.5% ± 1.1%

Computing Devices in the Home: One or more devices

This data is only available at the Census **tract** level. [About the data...](#)



Characteristics of Internet Subscriptions: Summary

This data is only available at the Census **tract** level. [About the data...](#)

Percentages

Population in households reporting...	US	New York	Columbia County
Estimated population	316,606,796	19,000,028	57,924 ± 334
With computer and broadband	86.2% ± 0.1%	86.4% ± 0.1%	84.0% ± 1.6%
With computer, but no Internet subscription	7.2% ± 0.1%	6.7% ± 0.1%	8.7% ± 1.3%
Without computer	6.3% ± 0.1%	6.7% ± 0.1%	6.7% ± 0.9%

Source: <https://internet-is-infrastructure.org/>

Data on Internet Service Providers (ISP) in Columbia County

96.8% New York State residents have access to a wired or fixed wireless connection with broadband download speeds of 25 Mbps or faster. 97.5% of Columbia Co. residents have access to broadband with download speeds of 25 Mbps or faster; 95.7% have access of speeds of 100 Mbps or faster; 44.5% have access to speeds of 1 Gbps.

But just 70.0% of New York residents have access to a wired plan with that minimum speed that costs \$60/month or less. The average download speed in New York is 156.0 Mbps.

Source: <https://broadbandnow.com>

- There are 9 residential terrestrial (wired and fixed wireless) internet providers
- The fastest speed available is 1 Gbps (in 86.89% of census block groups)

Source: <https://internet-is-infrastructure.org/>

- Average download speed, 47.95 Mbps (data not available for some zip codes)
- Fastest average download speed, 115.13 Mbps (data not available for some zip codes)
- Lowest priced terrestrial broadband service: \$48.79; average lowest price: \$48.96

Source: <https://github.com/BroadbandNow/Open-Data>

Residential Providers for Columbia County

Satellite providers are not included.

Geography: Census Block group

About the data... CSV

any Satellite providers Show Tech Home Block group

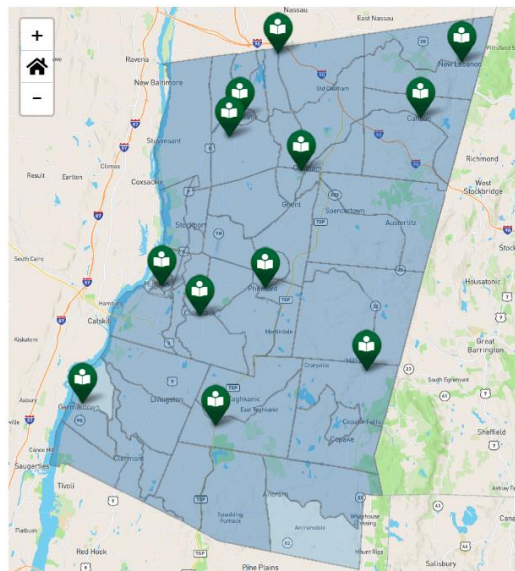
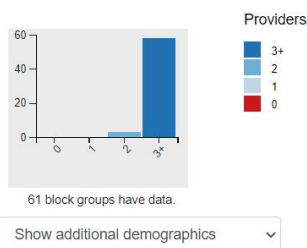
Columbia County

Wireline and Fixed-Wireless Providers in Columbia County

Provider	Tech	Block groups	(% of Block groups)	Max ↓	Max ↑	Total Block groups
Consolidated Communications (View on map)	DSL	57	93.44%	50.0 Mbs	10.0 Mbs	61
Consolidated Communications (View on map)	Fiber	52	85.25%	1.0 Gbs	1.0 Gbs	61
Mid-Hudson Data Corp. (View on map)	Fixed Wireless	50	81.97%	25.0 Mbs	4.0 Mbs	61
Charter Communications Inc (View on map)	Cable	40	65.57%	940.0 Mbs	35.0 Mbs	61
Mid-Hudson CableVision (View on map)	Cable	36	59.02%	250.0 Mbs	25.0 Mbs	61
Verizon New York Inc. (View on map)	DSL	36	59.02%	15.0 Mbs	1.0 Mbs	61
Mid-Hudson Data Corp. (View on map)	Fiber	28	45.9%	250.0 Mbs	50.0 Mbs	61
Hudson Valley Wireless (View on map)	Fixed Wireless	20	32.79%	25.0 Mbs	4.0 Mbs	61
Mid-Hudson CableVision (View on map)	Fiber	20	32.79%	250.0 Mbs	50.0 Mbs	61
Consolidated Communications (View on map)	Cable	17	27.87%	50.0 Mbs	5.0 Mbs	61
GTel Teleconnections (View on map)	Fiber	10	16.39%	100.0 Mbs	50.0 Mbs	61
GTel Teleconnections (View on map)	DSL	8	13.11%	25.0 Mbs	5.0 Mbs	61
CTC of New York Red Hook (View on map)	DSL	4	6.56%	115.0 Mbs	7.0 Mbs	61
Consolidated Communications - Custom Fiber Plan No New Customers (View on map)	Fiber	1	1.64%	1.0 Gbs	1.0 Gbs	61

Number of wireline (fixed) providers

About the data... 25↓/3↑ or faster Satellite providers Home Block group



Source: <https://internet-is-infrastructure.org/>

Key Demographic Data: Columbia County

- 51% of children enrolled in public schools are eligible for free or reduced-price lunch in Columbia County.

Source: <https://www.countyhealthrankings.org/>

Key Demographics: Columbia County

[Formatted](#) [CSV](#)

	Columbia
Total population	60,371
Median household income	\$66,787 ± \$2,129
Population per sq/mi	95
Total households	24,966 ± 497
Average Household Size	2.32 ± 0.04
Households per sq/mi	39
Area (sq/mi)	634.7
Families in poverty	11.23% ± 1.47%
Proportion Persons of Color	11.01% ± 0.82%
Proportion Black or African American	4.54% ± 0.42%
Proportion Hispanic or Latino	4.77%
Proportion Native American	0.06%
Proportion of workers who work from home	7.18% ± 0.93%

Urban/Rural Divide

[About the data...](#) [! About Using the 2010 Census Blocks Assignments](#) [Formatted](#) [CSV](#)

There are two sources of urban/rural block characterizations, and the FCC provides an estimate of population for each block. However the resulting data likely have large margins of error. All the same, this view, and the related view for [Well-Served Blocks](#) can provide a first-order approximation to the Urban/Rural divide in your community. Use your best judgement and read the cautionary notes when interpreting this data.

Census 25J/3† or faster Satellite providers Home Households Percentages

	Households	Households (%)	0	1	2	3+ Providers
Urban	6,884	25.8%	0.1%	2.2%	44.6%	53.1%
Rural	19,824	74.2%	1.0%	13.7%	39.4%	45.8%
Total	26,708		0.7%	10.8%	40.8%	47.7%

- The *Urban/Rural* selection is based on the US Census. Toggle the menu to choose which characterization is applied.
- Population data is drawn from the [FCC Staff Estimates](#) of population per block.

Source: <https://internet-is-infrastructure.org/>
Data accessed April 2021



Dutchess County Digital Divide Data

Table of Contents:

- Data on Computer & Internet Use in Dutchess County
- Data on Internet Service Providers (ISP) in Dutchess County
- Demographic Data

Data on Computer & Internet Use in Dutchess County

	New York	Dutchess County
Households with a computer	89.6%	92.2%
...with a desktop or laptop	78.5%	83.3%
...with a smartphone	78.4%	79.5%
...with a tablet or portable wireless computer	59.2%	63.0%
...with other	4.3%	5.6%
Households with a broadband internet subscription	82.8%	88.1%
...cellular data plan	63.5%	67.7%
...broadband such as cable, fiber optic, or DSL	72.6%	80.4%
...Satellite	3.6%	3.3%
...dial-up alone	0.3%	0.4%
...other service alone	0.1%	0.1%

Source: <https://www.census.gov/acs/www/data/data-tables-and-tools/narrative-profiles/2019/>

Internet Subscriptions: US, New York, and Dutchess County

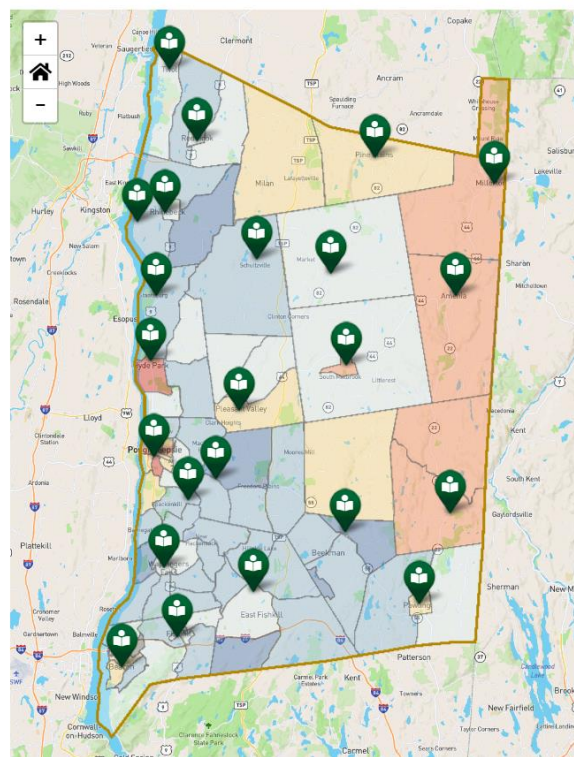
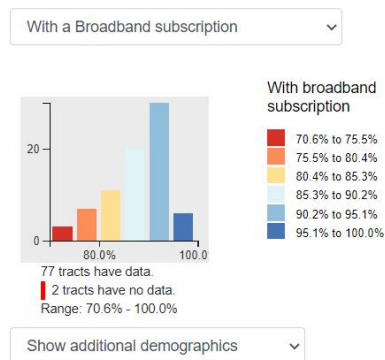
This data is only available at the Census tract level. [About the data...](#)

Households reporting...	US	New York	Dutchess County
With an Internet subscription	83.0% ± 0.1%	83.2% ± 0.1%	88.4% ± 0.6%
With a Broadband subscription	82.7% ± 0.1%	82.8% ± 0.1%	88.1% ± 0.6%
Wireline (e.g. DSL, cable, or fiber) service	68.9% ± 0.2%	72.6% ± 0.2%	80.4% ± 0.8%
Wireline alone	17.5%	21.5% ± 0.1%	21.7% ± 0.8%
Cellular	66.3% ± 0.2%	63.5% ± 0.2%	67.7% ± 1.0%
Cellular data plan alone	10.0% ± 0.1%	8.3% ± 0.1%	5.9% ± 0.5%
Satellite Internet service	6.3% ± 0.1%	3.6% ± 0.1%	3.3% ± 0.4%
Satellite Internet alone	1.1%	0.6%	0.4% ± 0.1%
Other Service	0.2%	0.2%	0.1%
Dial-up service alone	0.4% ± 0.1%	0.3% ± 0.1%	0.4% ± 0.1%
Without an Internet subscription	17.0% ± 0.1%	16.8% ± 0.1%	11.6% ± 0.6%
Have access, but without a subscription	3.0%	2.9%	2.2% ± 0.3%
No Internet access	13.9%	13.9%	9.4% ± 0.6%

Internet Subscription Rates: With a Broadband subscription

This data is only available at the Census tract level.

[About the data...](#)



Computing Devices in the Home: Summary

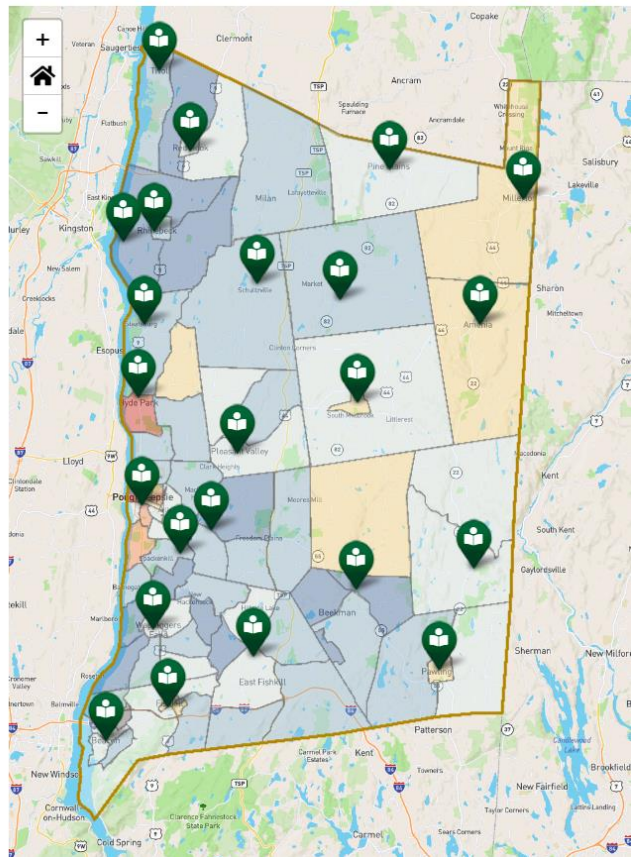
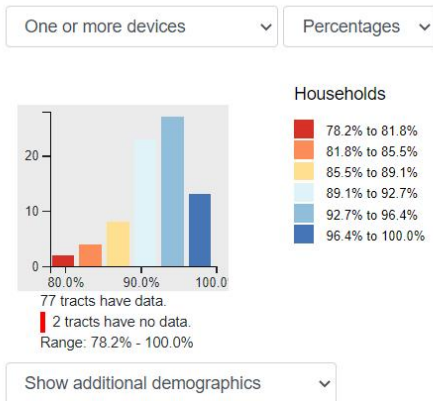
This data is only available at the Census **tract** level. [About the data...](#)

Percentages

Households reporting...	US	New York	Dutchess County
Households with one or more computing devices (total)	90.3% ± 0.1%	89.6% ± 0.1%	92.2% ± 0.6%
Desktop or Laptop (total)	77.8% ± 0.2%	78.5% ± 0.2%	83.3% ± 0.8%
Desktop or Laptop, with no other type of computing device	6.6% ± 0.1%	7.2% ± 0.1%	8.0% ± 0.5%
Smart Phone (total)	79.9% ± 0.1%	78.4% ± 0.1%	79.5% ± 0.6%
Smart Phone, with no other type of computing device	7.0% ± 0.1%	5.9% ± 0.1%	4.1% ± 0.5%
Tablet (total)	59.6% ± 0.2%	59.2% ± 0.2%	63.0% ± 0.9%
Tablet, with no other type of computing device	0.9% ± 0.1%	1.0% ± 0.1%	1.0% ± 0.2%
Other computer (total)	3.6% ± 0.1%	4.3% ± 0.1%	5.6% ± 0.6%
Other computer, with no other type of computing device	0.1% ± 0.1%	0.1% ± 0.1%	0.2% ± 0.1%
Without a computer	9.7% ± 0.1%	10.4% ± 0.1%	7.8% ± 0.6%

Computing Devices in the Home: One or more devices

This data is only available at the Census **tract** level. [About the data...](#)



Characteristics of Internet Subscriptions: Summary

This data is only available at the Census **tract** level. [About the data...](#)

Percentages

Population in households reporting...	US	New York	Dutchess County
Estimated population	316,606,796	19,000,028	275,549 ± 979
With computer and broadband	86.2% ± 0.1%	86.4% ± 0.1%	91.4% ± 0.5%
With computer, but no Internet subscription	7.2% ± 0.1%	6.7% ± 0.1%	3.7% ± 0.4%
Without computer	6.3% ± 0.1%	6.7% ± 0.1%	4.6% ± 0.4%

Source: <https://internet-is-infrastructure.org/>

Data on Internet Service Providers (ISP) in Dutchess County

96.8% New York State residents have access to a wired or fixed wireless connection with broadband download speeds of 25 Mbps or faster. 97.7% of Dutchess Co. residents have access to broadband with download speeds of 25 Mbps or faster; 97.7% have access to speeds of 100 Mbps or faster; and 2.1% have access to speeds of 1 Gbps.

But just 70.0% of New York residents have access to a wired plan with that minimum speed that costs \$60/month or less. The average download speed in New York is 156.0 Mbps.

Source: <https://broadbandnow.com>

- There are 9 residential terrestrial (wired and fixed wireless) internet providers.
- The fastest speed available is 1 Gbps (in 5.24% of census block groups).

Source: <https://internet-is-infrastructure.org/>

- Average download speed, 108.91 Mbps (data not available for a small number of zip codes)
- Fastest average download speed, 256.45 Mbps (data not available for a small number of zip codes)
- Lowest priced terrestrial broadband service: \$39.99; average lowest price: \$47.58

Source: <https://github.com/BroadbandNow/Open-Data>

Residential Providers for Dutchess County

Satellite providers *are not* included.

Geography: Census Block group

[About the data...](#) [CSV](#)

any Satellite providers Show Tech Home Block group

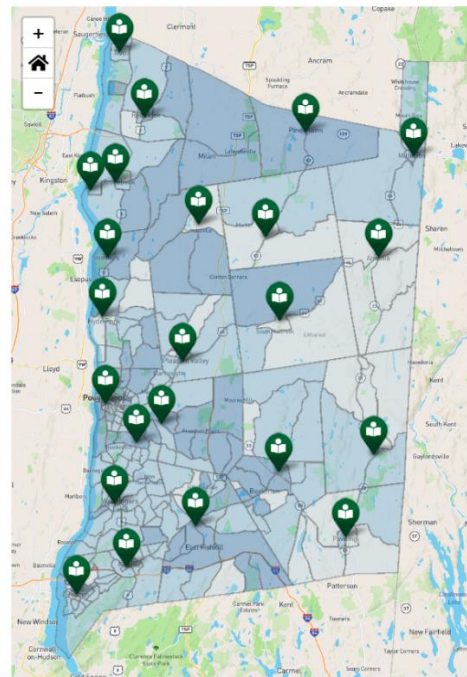
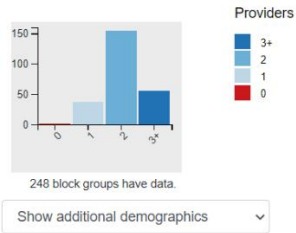
Dutchess County

Wireline and Fixed-Wireless Providers in Dutchess County

Provider	Tech	Block groups	(% of Block groups)	Max ↓	Max ↑	Total Block groups
Verizon New York Inc. (View on map)	DSL	217	87.5%	15.0 Mbs	1.0 Mbs	248
Cablevision (View on map)	Cable	174	70.16%	500.0 Mbs	35.0 Mbs	248
Verizon New York Inc. (View on map)	Fiber	145	58.47%	940.0 Mbs	880.0 Mbs	248
Charter Communications Inc (View on map)	Cable	103	41.53%	940.0 Mbs	35.0 Mbs	248
Frontier Communication of Sylvan Lake New York (View on map)	DSL	45	18.15%	115.0 Mbs	7.0 Mbs	248
Comcast (View on map)	Cable	39	15.73%	987.0 Mbs	35.0 Mbs	248
CTC of New York Red Hook (View on map)	DSL	27	10.89%	115.0 Mbs	7.0 Mbs	248
Consolidated Communications (View on map)	DSL	18	7.26%	50.0 Mbs	10.0 Mbs	248
Consolidated Communications (View on map)	Fiber	13	5.24%	1.0 Gbs	1.0 Gbs	248
Mid-Hudson CableVision (View on map)	Cable	3	1.21%	250.0 Mbs	25.0 Mbs	248
One Ring Networks (View on map)	Other Copper	1	0.4%	1.0 Mbs	1.0 Mbs	248

Number of wireline (fixed) providers

[About the data...](#) 25/31 or faster Satellite providers Home Block group



Source: <https://internet-is-infrastructure.org/>

Key Demographic Data: Dutchess County

- 35% of children enrolled in public schools are eligible for free or reduced-price lunch in Dutchess County.

Source: <https://www.countyhealthrankings.org/>

Key Demographics: Dutchess County

Formatted CSV

	Dutchess
Total population	293,754
Median household income	\$81,219 ± \$1,464
Population per sq/mi	369
Total households	108,413 ± 900
Average Household Size	2.54 ± 0.02
Households per sq/mi	136
Area (sq/mi)	795.6
Families in poverty	8.55% ± 0.74%
Proportion Persons of Color	21.79% ± 0.62%
Proportion Black or African American	10.54% ± 0.28%
Proportion Hispanic or Latino	12.19%
Proportion Native American	0.32%
Proportion of workers who work from home	6.36% ± 0.44%

Urban/Rural Divide

About the data... About Using the 2010 Census Blocks Assignments Formatted CSV

There are two sources of urban/rural block characterizations, and the FCC provides an estimate of population for each block. However the resulting data likely have large margins of error. All the same, this view, and the related view for [Well-Served Blocks](#) can provide a first-order approximation to the Urban/Rural divide in your community. Use your best judgement and read the cautionary notes when interpreting this data.

Census any Satellite providers Home Households Percentages

	Households	Households (%)	0	1	2	3+ Providers
Urban	81,212	73.3%	0.6%	1.8%	90.6%	7.1%
Rural	29,528	26.7%	1.2%	6.8%	75.3%	16.7%
Total	110,740		0.8%	3.1%	86.5%	9.6%

- The *Urban/Rural* selection is based on the US Census. Toggle the menu to choose which characterization is applied.
- Population data is drawn from the [FCC Staff Estimates](#) of population per block.

Source: <https://internet-is-infrastructure.org/>



Greene County Digital Divide Data

Table of Contents:

- Data on Computer & Internet Use in Greene County
- Data on Internet Service Providers (ISP) in Greene County
- Demographic Data

Data on Computer & Internet Use in Greene County

	New York	Greene County
Households with a computer	89.6%	84.0%
...with a desktop or laptop	78.5%	73.3%
...with a smartphone	78.4%	64.4%
...with a tablet or portable wireless computer	59.2%	48.1%
...with other	4.3%	2.3%
Households with a broadband internet subscription	82.8%	73.5%
...cellular data plan	63.5%	46.5%
...broadband such as cable, fiber optic, or DSL	72.6%	55.2%
...Satellite	3.6%	7.8%
...dial-up alone	0.3%	0.7%
...other service alone	0.1%	0.2%

Source: <https://www.census.gov/acs/www/data/data-tables-and-tools/narrative-profiles/2019/>

Internet Subscriptions: US, New York, and Greene County

This data is only available at the Census **tract** level. [About the data...](#)

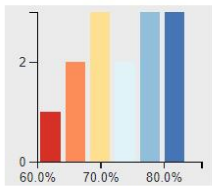
Households reporting...	US	New York	Greene County
With an Internet subscription	83.0% ± 0.1%	83.2% ± 0.1%	74.3% ± 2.3%
With a Broadband subscription	82.7% ± 0.1%	82.8% ± 0.1%	73.5% ± 2.2%
Wireline (e.g. DSL, cable, or fiber) service	68.9% ± 0.2%	72.6% ± 0.2%	55.2% ± 2.4%
Wireline alone	17.5%	21.5% ± 0.1%	29.8% ± 2.2%
Cellular	66.3% ± 0.2%	63.5% ± 0.2%	46.5% ± 2.2%
Cellular data plan alone	10.0% ± 0.1%	8.3% ± 0.1%	11.7% ± 1.7%
Satellite Internet service	6.3% ± 0.1%	3.6% ± 0.1%	7.8% ± 1.2%
Satellite Internet alone	1.1%	0.6%	3.7% ± 1.0%
Other Service	0.2%	0.2%	0.2% ± 0.2%
Dial-up service alone	0.4% ± 0.1%	0.3% ± 0.1%	0.7% ± 0.3%
Without an Internet subscription	17.0% ± 0.1%	16.8% ± 0.1%	25.7% ± 2.3%
Have access, but without a subscription	3.0%	2.9%	3.5% ± 1.0%
No Internet access	13.9%	13.9%	22.2% ± 2.2%

Internet Subscription Rates: With a Broadband subscription

This data is only available at the Census **tract** level.

[About the data...](#)

With a Broadband subscription

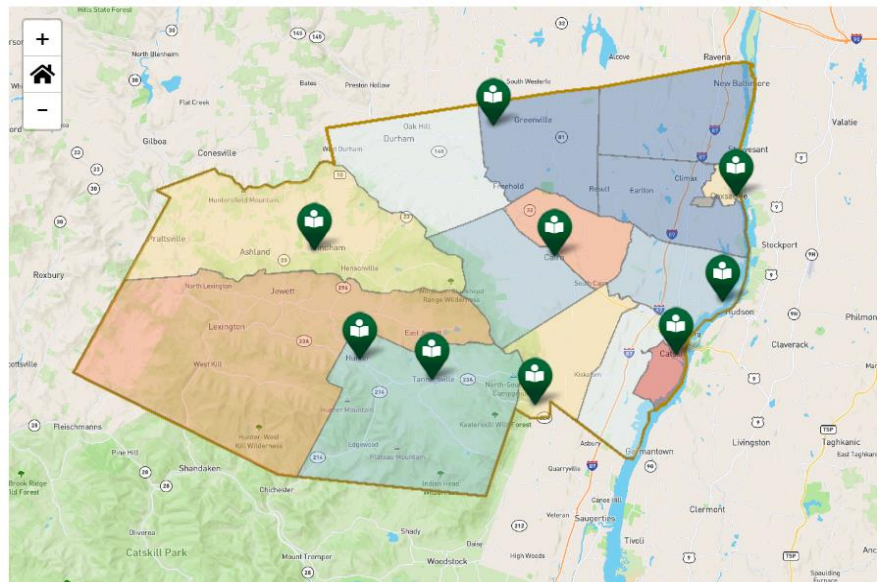


With broadband subscription

- 60.5% to 64.4%
- 64.4% to 68.4%
- 68.4% to 72.3%
- 72.3% to 76.2%
- 76.2% to 80.2%
- 80.2% to 84.1%

14 tracts have data.
1 tract has no data.
Range: 60.5% - 84.1%

Show additional demographics



Computing Devices in the Home: Summary

This data is only available at the Census **tract** level. [About the data...](#)

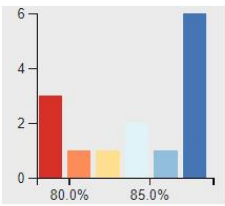
Percentages

Households reporting...	US	New York	Greene County
Households with one or more computing devices (total)	90.3% ± 0.1%	89.6% ± 0.1%	84.0% ± 2.0%
Desktop or Laptop (total)	77.8% ± 0.2%	78.5% ± 0.2%	73.3% ± 2.1%
Desktop or Laptop, with no other type of computing device	6.6% ± 0.1%	7.2% ± 0.1%	14.4% ± 1.6%
Smart Phone (total)	79.9% ± 0.1%	78.4% ± 0.1%	64.4% ± 2.6%
Smart Phone, with no other type of computing device	7.0% ± 0.1%	5.9% ± 0.1%	5.9% ± 1.3%
Tablet (total)	59.6% ± 0.2%	59.2% ± 0.2%	48.1% ± 2.6%
Tablet, with no other type of computing device	0.9% ± 0.1%	1.0% ± 0.1%	1.4% ± 0.6%
Other computer (total)	3.6% ± 0.1%	4.3% ± 0.1%	2.3% ± 0.6%
Other computer, with no other type of computing device	0.1% ± 0.1%	0.1% ± 0.1%	0.1% ± 0.1%
Without a computer	9.7% ± 0.1%	10.4% ± 0.1%	16.0% ± 2.0%

Computing Devices in the Home: One or more devices

This data is only available at the Census **tract** level. [About the data...](#)

One or more devices

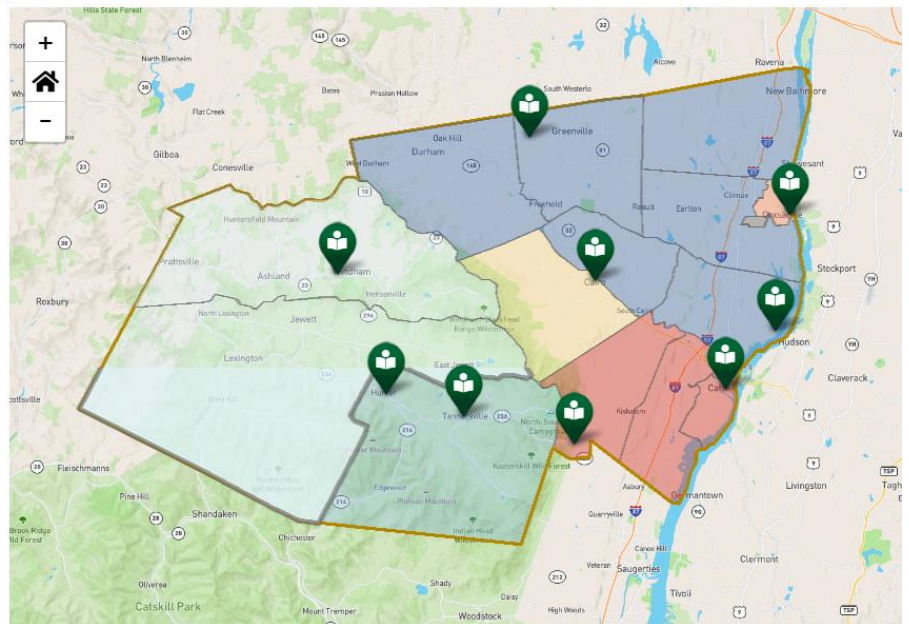


Households

- 78.1% to 79.9%
- 79.9% to 81.7%
- 81.7% to 83.5%
- 83.5% to 85.3%
- 85.3% to 87.1%
- 87.1% to 88.9%

14 tracts have data.
1 tract has no data.
Range: 78.1% - 88.9%

Show additional demographics



Characteristics of Internet Subscriptions: Summary

This data is only available at the Census **tract** level. [About the data...](#)

Percentages

Population in households reporting...	US	New York	Greene County
Estimated population	316,606,796	19,000,028	44,131 ± 406
With computer and broadband	86.2% ± 0.1%	86.4% ± 0.1%	81.3% ± 1.8%
With computer, but no Internet subscription	7.2% ± 0.1%	6.7% ± 0.1%	9.2% ± 1.3%
Without computer	6.3% ± 0.1%	6.7% ± 0.1%	8.9% ± 1.3%

Source: <https://internet-is-infrastructure.org/>

Data on Internet Service Providers (ISP) in Greene County

96.8% New York State residents have access to a wired or fixed wireless connection with broadband download speeds of 25 Mbps or faster. 95.0% of Greene Co. residents have access to broadband with download speeds of 25 Mbps or faster; 94.7% have access to speeds of 100 Mbps or faster; and 0.44% have access to speeds of 1 Gbps.

But just 70% of New York residents have access to a wired plan with that minimum speed that costs \$60/month or less. The average download speed in New York is 156.0 Mbps.

Source: <https://broadbandnow.com>

- There are 9 residential terrestrial (wired and fixed wireless) internet providers
- The fastest speed available is 1 Gbps (in 6.98% of census block groups).

Source: <https://internet-is-infrastructure.org/>

- Average download speed, 70.13 Mbps (data not available for several zip codes)
- Fastest average download speed, 154.69 Mbps (data not available for several zip codes)
- Lowest priced terrestrial broadband service: \$48.79; average lowest price: \$54.84 (data not available for several zip codes)

Source: <https://github.com/BroadbandNow/Open-Data>

Residential Providers for Greene County

Satellite providers *are not* included.

Geography: Census Block group

[About the data...](#) [CSV](#)

any Satellite providers Show Tech Home Block group

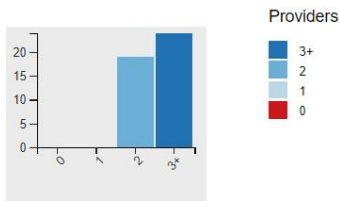
Greene County

Wireline and Fixed-Wireless Providers in Greene County

Provider	Tech	Block groups	(% of Block groups)	Max ↓	Max ↑	Total Block groups
Mid-Hudson Data Corp. (View on map)	Fixed Wireless	42	97.67%	25.0 Mbs	5.0 Mbs	43
Mid-Hudson CableVision (View on map)	Cable	38	88.37%	250.0 Mbs	25.0 Mbs	43
Verizon New York Inc. (View on map)	DSL	36	83.72%	15.0 Mbs	1.0 Mbs	43
Mid-Hudson Data Corp. (View on map)	Fiber	31	72.09%	250.0 Mbs	50.0 Mbs	43
Mid-Hudson CableVision (View on map)	Fiber	27	62.79%	250.0 Mbs	50.0 Mbs	43
Charter Communications Inc (View on map)	Cable	14	32.56%	940.0 Mbs	35.0 Mbs	43
State Telephone Company Inc. (View on map)	Fiber	13	30.23%	150.0 Mbs	50.0 Mbs	43
Hudson Valley Wireless (View on map)	Fixed Wireless	8	18.6%	25.0 Mbs	4.0 Mbs	43
State Telephone Company Inc. (View on map)	DSL	8	18.6%	75.0 Mbs	25.0 Mbs	43
Consolidated Communications (View on map)	DSL	5	11.63%	50.0 Mbs	10.0 Mbs	43
Consolidated Communications (View on map)	Fiber	3	6.98%	1.0 Gbs	1.0 Gbs	43
MTC Cable (View on map)	Fiber	3	6.98%	200.0 Mbs	15.0 Mbs	43
MTC Cable (View on map)	Cable	1	2.33%	50.0 Mbs	5.0 Mbs	43
MTC Cable (View on map)	Fixed Wireless	1	2.33%	20.0 Mbs	2.0 Mbs	43
Rise Broadband (View on map)	Fixed Wireless	1	2.33%	25.0 Mbs	4.0 Mbs	43

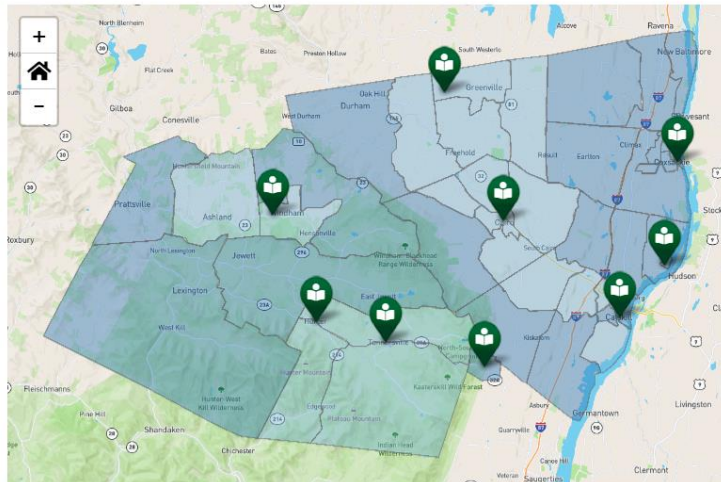
Number of wireline (fixed) providers

[About the data...](#) 251/31 or faster Satellite providers Home Block group



43 block groups have data.

[Show additional demographics](#)



Source: <https://internet-is-infrastructure.org/>

Key Demographic Data: Greene County

- 43% of children enrolled in public schools are eligible for free or reduced-price lunch in Greene County.

Source: <https://www.countyhealthrankings.org/>

Key Demographics: Greene County

Formatted CSV

	Greene
Total population	47,424
Median household income	\$53,601 ± \$1,989
Population per sq/mi	73
Total households	17,100 ± 457
Average Household Size	2.58 ± 0.06
Households per sq/mi	26
Area (sq/mi)	647.2
Families in poverty	12.85% ± 2.17%
Proportion Persons of Color	10.41% ± 0.96%
Proportion Black or African American	5.82% ± 0.50%
Proportion Hispanic or Latino	5.91%
Proportion Native American	0.64% ± 0.29%
Proportion of workers who work from home	5.11% ± 1.00%

Urban/Rural Divide

About the data... About Using the 2010 Census Blocks Assignments Formatted CSV

There are two sources of urban/rural block characterizations, and the FCC provides an estimate of population for each block. However the resulting data likely have large margins of error. All the same, this view, and the related view for [Well-Served Blocks](#) can provide a first-order approximation to the Urban/Rural divide in your community. Use your best judgement and read the cautionary notes when interpreting this data.

Census any Satellite providers Home Households Percentages

	Households	Households (%)	0	1	2	3+ Providers
Urban	4,543	22.4%	0.1%	2.9%	2.4%	94.6%
Rural	15,743	77.6%	2.6%	5.9%	16.2%	75.4%
Total	20,286		2.0%	5.2%	13.1%	79.7%

- The **Urban/Rural** selection is based on the US Census. Toggle the menu to choose which characterization is applied.
- Population data is drawn from the [FCC Staff Estimates](#) of population per block.

Source: <https://internet-is-infrastructure.org/>

Putnam County Digital Divide Data

Table of Contents:

Data on Computer & Internet Use in Putnam County
 Data on Internet Service Providers (ISP) in Putnam County
 Demographic Data

Data on Computer & Internet Use in Putnam County

	New York	Putnam County
Households with a computer	89.6%	94.7%
...with a desktop or laptop	78.5%	87.7%
...with a smartphone	78.4%	84.0%
...with a tablet or portable wireless computer	59.2%	67.4%
...with other	4.3%	5.4%
Households with a broadband internet subscription	82.8%	91.8%
...cellular data plan	63.5%	76.9%
...broadband such as cable, fiber optic, or DSL	72.6%	83.4%
...Satellite	3.6%	2.2%
...dial-up alone	0.3%	0.3%
...other service alone	0.1%	0.0%

Source: <https://www.census.gov/acs/www/data/data-tables-and-tools/narrative-profiles/2019/>

Internet Subscriptions: US, New York, and Putnam County

This data is only available at the Census **tract** level. [About the data...](#)

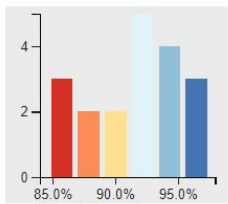
Households reporting...	US	New York	Putnam County
With an Internet subscription	83.0% ± 0.1%	83.2% ± 0.1%	92.2% ± 1.0%
With a Broadband subscription	82.7% ± 0.1%	82.8% ± 0.1%	91.8% ± 1.0%
Wireline (e.g. DSL, cable, or fiber) service	68.9% ± 0.2%	72.6% ± 0.2%	83.4% ± 1.2%
Wireline alone	17.5%	21.5% ± 0.1%	15.0% ± 1.2%
Cellular	66.3% ± 0.2%	63.5% ± 0.2%	76.9% ± 1.4%
Cellular data plan alone	10.0% ± 0.1%	8.3% ± 0.1%	7.4% ± 0.9%
Satellite Internet service	6.3% ± 0.1%	3.6% ± 0.1%	2.2% ± 0.4%
Satellite Internet alone	1.1%	0.6%	0.4% ± 0.3%
Other Service	0.2%	0.2%	0.0%
Dial-up service alone	0.4% ± 0.1%	0.3% ± 0.1%	0.3% ± 0.2%
Without an Internet subscription	17.0% ± 0.1%	16.8% ± 0.1%	7.8% ± 1.0%
Have access, but without a subscription	3.0%	2.9%	1.9% ± 0.5%
No Internet access	13.9%	13.9%	6.0% ± 0.8%

Internet Subscription Rates: With a Broadband subscription

This data is only available at the Census **tract** level.

[About the data...](#)

With a Broadband subscription

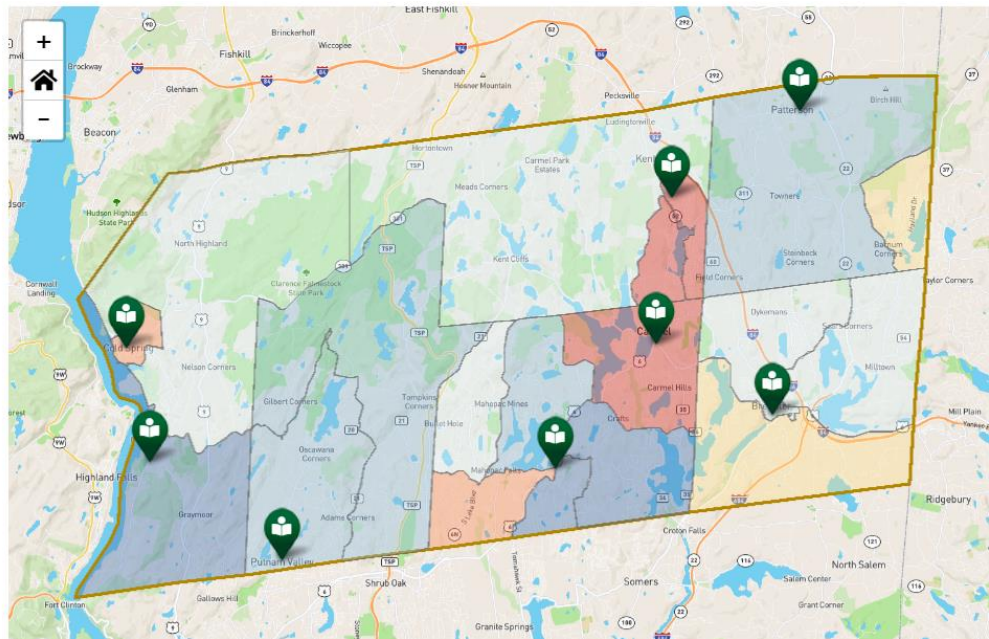


With broadband subscription

- 84.9% to 87.1%
- 87.1% to 89.2%
- 89.2% to 91.3%
- 91.3% to 93.5%
- 93.5% to 95.7%
- 95.7% to 97.8%

19 tracts have data.
Range: 84.9% - 97.8%

Show additional demographics



Computing Devices in the Home: Summary

This data is only available at the Census **tract** level. [About the data...](#)

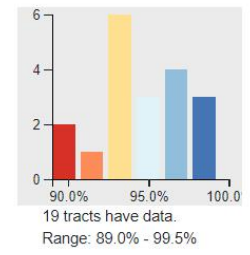
Percentages Formatted CSV

Households reporting...	US	New York	Putnam County
Households with one or more computing devices (total)	90.3% ± 0.1%	89.6% ± 0.1%	94.7% ± 0.8%
Desktop or Laptop (total)	77.8% ± 0.2%	78.5% ± 0.2%	87.7% ± 1.3%
Desktop or Laptop, with no other type of computing device	6.6% ± 0.1%	7.2% ± 0.1%	7.2% ± 0.9%
Smart Phone (total)	79.9% ± 0.1%	78.4% ± 0.1%	84.0% ± 1.1%
Smart Phone, with no other type of computing device	7.0% ± 0.1%	5.9% ± 0.1%	3.4% ± 0.8%
Tablet (total)	59.6% ± 0.2%	59.2% ± 0.2%	67.4% ± 1.7%
Tablet, with no other type of computing device	0.9% ± 0.1%	1.0% ± 0.1%	0.9% ± 0.4%
Other computer (total)	3.6% ± 0.1%	4.3% ± 0.1%	5.4% ± 1.0%
Other computer, with no other type of computing device	0.1% ± 0.1%	0.1% ± 0.1%	0.1% ± 0.1%
Without a computer	9.7% ± 0.1%	10.4% ± 0.1%	5.3% ± 0.8%

Computing Devices in the Home: One or more devices

This data is only available at the Census **tract** level. [About the data...](#)

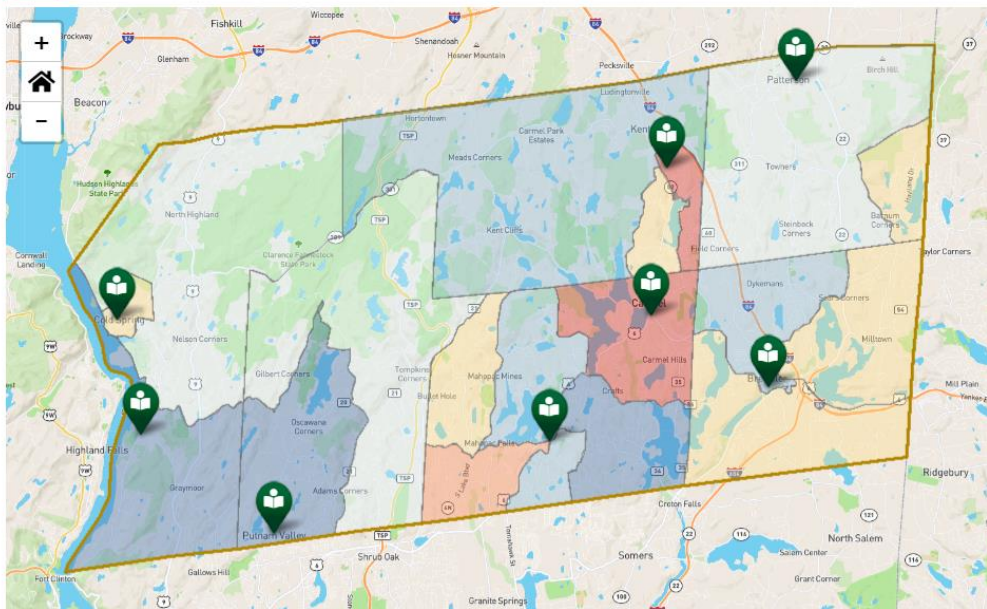
One or more devices Percentages



Households

- 89.0% to 90.8%
- 90.8% to 92.5%
- 92.5% to 94.3%
- 94.3% to 96.0%
- 96.0% to 97.8%
- 97.8% to 99.5%

Show additional demographics



Characteristics of Internet Subscriptions: Summary

This data is only available at the Census **tract** level. [About the data...](#)

Percentages Formatted CSV

Population in households reporting...	US	New York	Putnam County
Estimated population	316,606,796	19,000,028	96,240 ± 449
With computer and broadband	86.2% ± 0.1%	86.4% ± 0.1%	94.8% ± 0.7%
With computer, but no Internet subscription	7.2% ± 0.1%	6.7% ± 0.1%	2.1% ± 0.5%
Without computer	6.3% ± 0.1%	6.7% ± 0.1%	2.9% ± 0.5%

Source: <https://internet-is-infrastructure.org/>

Data on Internet Service Providers (ISP) in Putnam County

96.8% New York State residents have access to a wired or fixed wireless connection with broadband download speeds of 25 Mbps or faster. 99.0% of Putnam Co. residents have access to broadband with download speeds of 25 Mbps or faster; 99.0% have access to speeds of 100 Mbps or faster, and 0.42% have access to speeds of 1 Gbps.

But just 70.0% of New York residents have access to a wired plan with that minimum speed that costs \$60/month or less. The average download speed in New York is 156.0 Mbps.

Source: <https://broadbandnow.com>

- There are 7 residential terrestrial (wired and fixed wireless) internet providers.
- The fastest speed available is 1 Gbps (in 1.45% of census block groups).

Source: <https://internet-is-infrastructure.org/>

- Average download speed, 121.38 Mbps
- Fastest average download speed, 275.94 Mbps
- Lowest priced terrestrial broadband service: \$39.99/month; average lowest price: \$39.99

Source: <https://github.com/BroadbandNow/Open-Data>

Residential Providers for Putnam County

Satellite providers *are not* included.

Geography: Census Block group

[About the data...](#) [CSV](#)

any Satellite providers Show Tech Home Block group

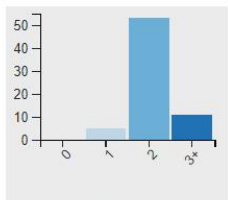
Putnam County

Wireline and Fixed-Wireless Providers in Putnam County

Provider	Tech	Block groups	(% of Block groups)	Max ↓	Max ↑	Total Block groups
Verizon New York Inc. (View on map)	DSL	69	100.0%	15.0 Mbs	1.0 Mbs	69
Verizon New York Inc. (View on map)	Fiber	62	89.86%	940.0 Mbs	880.0 Mbs	69
Comcast (View on map)	Cable	56	81.16%	987.0 Mbs	35.0 Mbs	69
Cablevision (View on map)	Cable	23	33.33%	500.0 Mbs	35.0 Mbs	69
Consolidated Communications (View on map)	DSL	3	4.35%	50.0 Mbs	10.0 Mbs	69
Charter Communications Inc (View on map)	Cable	2	2.9%	940.0 Mbs	35.0 Mbs	69
Consolidated Communications (View on map)	Fiber	1	1.45%	1.0 Gbs	1.0 Gbs	69
Frontier Communication of Connecticut (View on map)	DSL	1	1.45%	90.0 Mbs	5.0 Mbs	69
Frontier Communication of Sylvan Lake New York (View on map)	DSL	1	1.45%	18.0 Mbs	1.0 Mbs	69

Number of wireline (fixed) providers

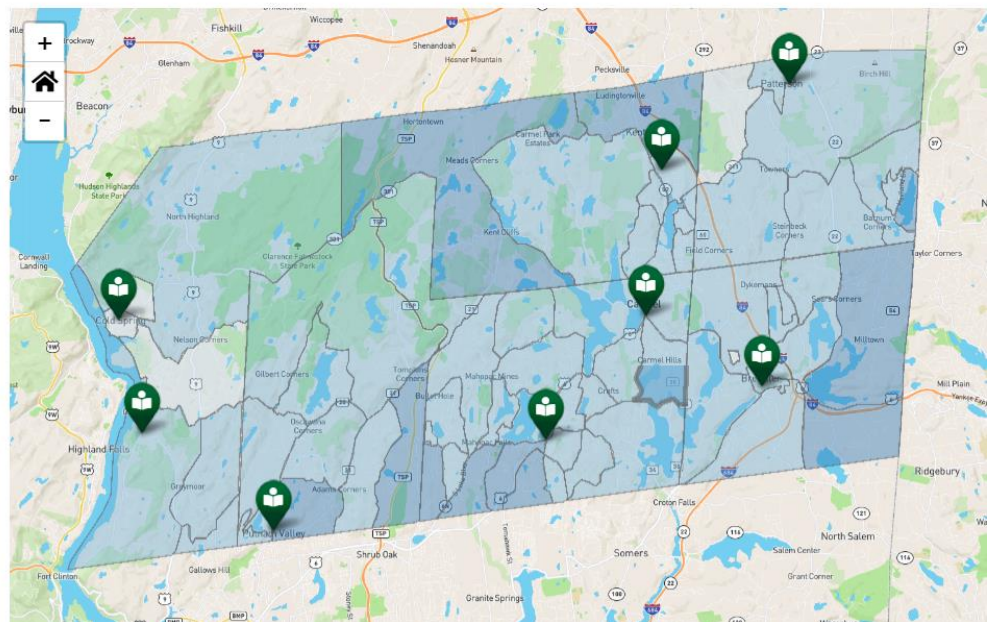
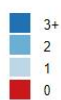
[About the data...](#) 25↓/3↑ or faster Satellite providers Home Block group



69 block groups have data.

[Show additional demographics](#)

Providers



Source: <https://internet-is-infrastructure.org/>

Key Demographic Data: Putnam County

- 24% of children enrolled in public schools are eligible for free or reduced-price lunch in Putnam County.

Source: <https://www.countyhealthrankings.org/>

Key Demographics: Putnam County

Formatted CSV

	Putnam
Total population	98,787
Median household income	\$104,486 ± \$3,292
Population per sq/mi	429
Total households	34,854 ± 500
Average Household Size	2.76 ± 0.04
Households per sq/mi	151
Area (sq/mi)	230.3
Families in poverty	3.79% ± 0.85%
Proportion Persons of Color	13.10% ± 0.97%
Proportion Black or African American	3.07% ± 0.32%
Proportion Hispanic or Latino	14.97%
Proportion Native American	0.21% ± 0.11%
Proportion of workers who work from home	4.54% ± 0.62%

Urban/Rural Divide

About the data... About Using the 2010 Census Blocks Assignments Formatted CSV

There are two sources of urban/rural block characterizations, and the FCC provides an estimate of population for each block. However the resulting data likely have large margins of error. All the same, this view, and the related view for [Well-Served Blocks](#) can provide a first-order approximation to the Urban/Rural divide in your community. Use your best judgement and read the cautionary notes when interpreting this data.

Census any Satellite providers Home Households Percentages

	Households	Households (%)	0	1	2	3+ Providers
Urban	38,219	52.5%	0.2%	3.1%	95.2%	1.4%
Rural	34,601	47.5%	0.3%	11.3%	83.4%	5.1%
Total	72,820		0.3%	7.0%	89.6%	3.2%

- The **Urban/Rural** selection is based on the US Census. Toggle the menu to choose which characterization is applied.
- Population data is drawn from the [FCC Staff Estimates](#) of population per block.

Source: <https://internet-is-infrastructure.org/>

Ulster County Digital Divide Data

Table of Contents:

Data on Computer & Internet Use in Ulster County
 Data on Internet Service Providers (ISP) in Ulster County
 Demographic Data

Data on Computer & Internet Use in Putnam County

	New York	Ulster County
Households with a computer	89.6%	91.4%
...with a desktop or laptop	78.5%	81.4%
...with a smartphone	78.4%	76.0%
...with a tablet or portable wireless computer	59.2%	56.2%
...with other	4.3%	3.1%
Households with a broadband internet subscription	82.8%	86.1%
...cellular data plan	63.5%	59.0%
...broadband such as cable, fiber optic, or DSL	72.6%	77.6%
...Satellite	3.6%	3.7%
...dial-up alone	0.3%	0.4%
...other service alone	0.1%	0.1%

Source: <https://www.census.gov/acs/www/data/data-tables-and-tools/narrative-profiles/2019/>

Internet Subscriptions: US, New York, and Ulster County

This data is only available at the Census tract level. [About the data...](#)

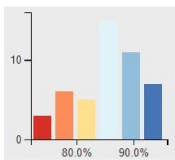
Households reporting...	US	New York	Ulster County
With an Internet subscription	83.0% ± 0.1%	83.2% ± 0.1%	86.5% ± 0.8%
With a Broadband subscription	82.7% ± 0.1%	82.8% ± 0.1%	86.1% ± 0.8%
Wireline (e.g. DSL, cable, or fiber) service	68.9% ± 0.2%	72.6% ± 0.2%	77.6% ± 1.0%
Wireline alone	17.5%	21.5% ± 0.1%	29.3% ± 1.1%
Cellular	66.3% ± 0.2%	63.5% ± 0.2%	59.0% ± 1.1%
Cellular data plan alone	10.0% ± 0.1%	8.3% ± 0.1%	6.0% ± 0.6%
Satellite Internet service	6.3% ± 0.1%	3.6% ± 0.1%	3.7% ± 0.5%
Satellite Internet alone	1.1%	0.6%	1.0% ± 0.3%
Other Service	0.2%	0.2%	0.2% ± 0.2%
Dial-up service alone	0.4% ± 0.1%	0.3% ± 0.1%	0.4% ± 0.1%
Without an Internet subscription	17.0% ± 0.1%	16.8% ± 0.1%	13.5% ± 0.8%
Have access, but without a subscription	3.0%	2.9%	2.2% ± 0.4%
No Internet access	13.9%	13.9%	11.3% ± 0.8%

Internet Subscription Rates: With a Broadband subscription

This data is only available at the Census tract level.

[About the data...](#)

With a Broadband subscription

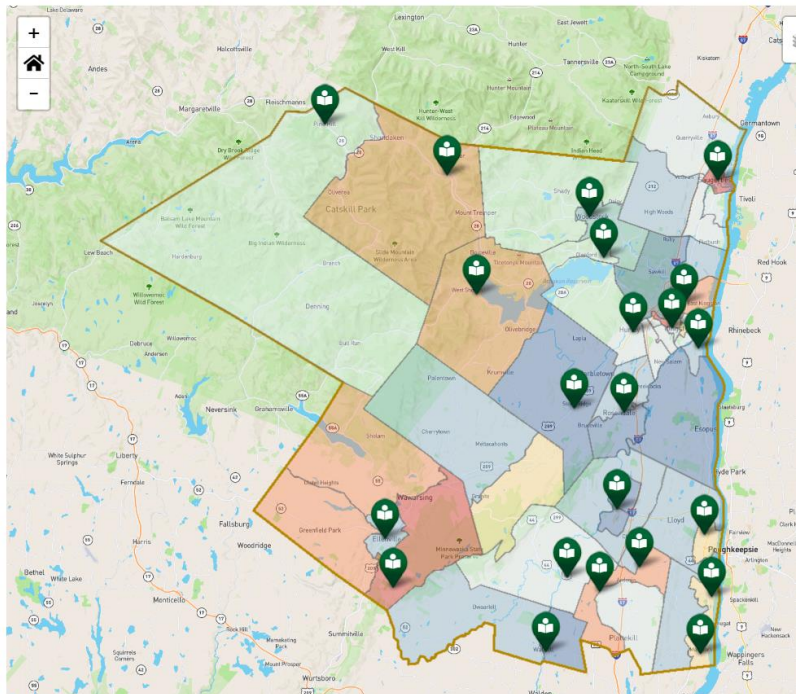


47 tracts have data.
Range: 72.4% - 95.8%

Show additional demographics

With broadband subscription

- 72.4% to 76.3%
- 76.3% to 80.2%
- 80.2% to 84.1%
- 84.1% to 88.0%
- 88.0% to 91.9%
- 91.9% to 95.8%



Computing Devices in the Home: Summary

This data is only available at the Census tract level. [About the data...](#)

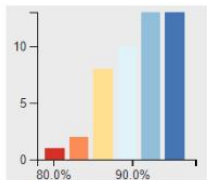
Percentages

Households reporting...	US	New York	Ulster County
Households with one or more computing devices (total)	90.3% ± 0.1%	89.6% ± 0.1%	91.4% ± 0.7%
Desktop or Laptop (total)	77.8% ± 0.2%	78.5% ± 0.2%	81.4% ± 0.9%
Desktop or Laptop, with no other type of computing device	6.6% ± 0.1%	7.2% ± 0.1%	10.7% ± 0.7%
Smart Phone (total)	79.9% ± 0.1%	78.4% ± 0.1%	76.0% ± 1.0%
Smart Phone, with no other type of computing device	7.0% ± 0.1%	5.9% ± 0.1%	5.3% ± 0.6%
Tablet (total)	59.6% ± 0.2%	59.2% ± 0.2%	56.2% ± 1.4%
Tablet, with no other type of computing device	0.9% ± 0.1%	1.0% ± 0.1%	0.8% ± 0.2%
Other computer (total)	3.6% ± 0.1%	4.3% ± 0.1%	3.1% ± 0.4%
Other computer, with no other type of computing device	0.1% ± 0.1%	0.1% ± 0.1%	0.0% ± 0.1%
Without a computer	9.7% ± 0.1%	10.4% ± 0.1%	8.6% ± 0.7%

Computing Devices in the Home: One or more devices

This data is only available at the Census tract level. [About the data...](#)

One or more devices



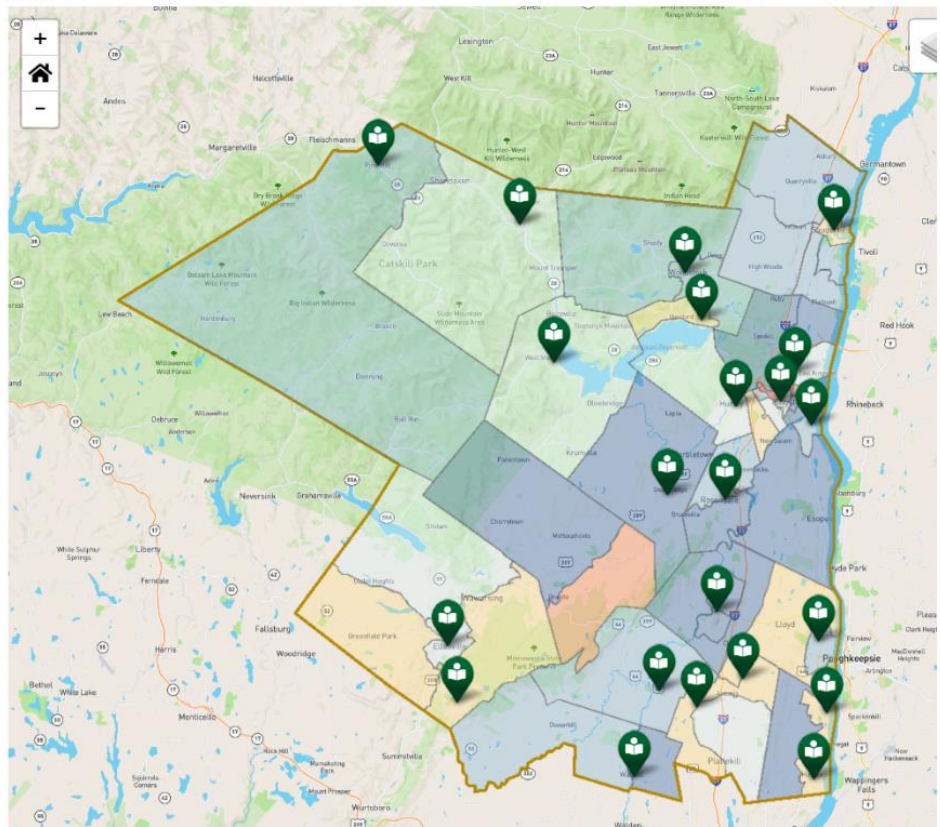
Households

- 79.0% to 82.0%
- 82.0% to 85.1%
- 85.1% to 88.1%
- 88.1% to 91.1%
- 91.1% to 94.2%
- 94.2% to 97.2%

47 tracts have data.

Range: 79.0% - 97.2%

Show additional demographics



Characteristics of Internet Subscriptions: Summary

This data is only available at the Census **tract** level. [About the data...](#)

Percentages

Population in households reporting...	US	New York	Ulster County
Estimated population	316,606,796	19,000,028	167,002 ± 634
With computer and broadband	86.2% ± 0.1%	86.4% ± 0.1%	89.4% ± 0.7%
With computer, but no Internet subscription	7.2% ± 0.1%	6.7% ± 0.1%	4.9% ± 0.6%
Without computer	6.3% ± 0.1%	6.7% ± 0.1%	5.2% ± 0.5%

Source: <https://internet-is-infrastructure.org/>

Data on Internet Service Providers (ISP) in Ulster County

96.8% New York State residents have access to a wired or fixed wireless connection with broadband download speeds of 25 Mbps or faster. 99.4% of Ulster Co. residents have access to broadband with download speeds of 25 Mbps or faster; 99.4% have access to download speeds of 100 Mbps or faster; and 0.7% have access to speeds of 1 Gbit.

But just 70.0% of New York residents have access to a wired plan with that minimum speed that costs \$60/month or less. The average download speed in New York is 156.0 Mbps.

Source: <https://broadbandnow.com>

- There are 11 residential terrestrial (wired and fixed wireless) internet providers
- The fastest speed available is 1 Gbps (in 0.66% of census block groups)

Source: <https://internet-is-infrastructure.org/>

- Average download speed, 100.78 Mbps (data not available for some zip codes)
- Fastest average download speed, 254.70 Mbps (data not available for some zip codes)
- Lowest priced terrestrial broadband service: \$39.99; average lowest price: \$64.40

Source: <https://github.com/BroadbandNow/Open-Data>

Residential Providers for Ulster County

Satellite providers *are not* included.

Geography: Census Block group

[About the data...](#) [CSV](#)

any Satellite providers Show Tech Home Block group

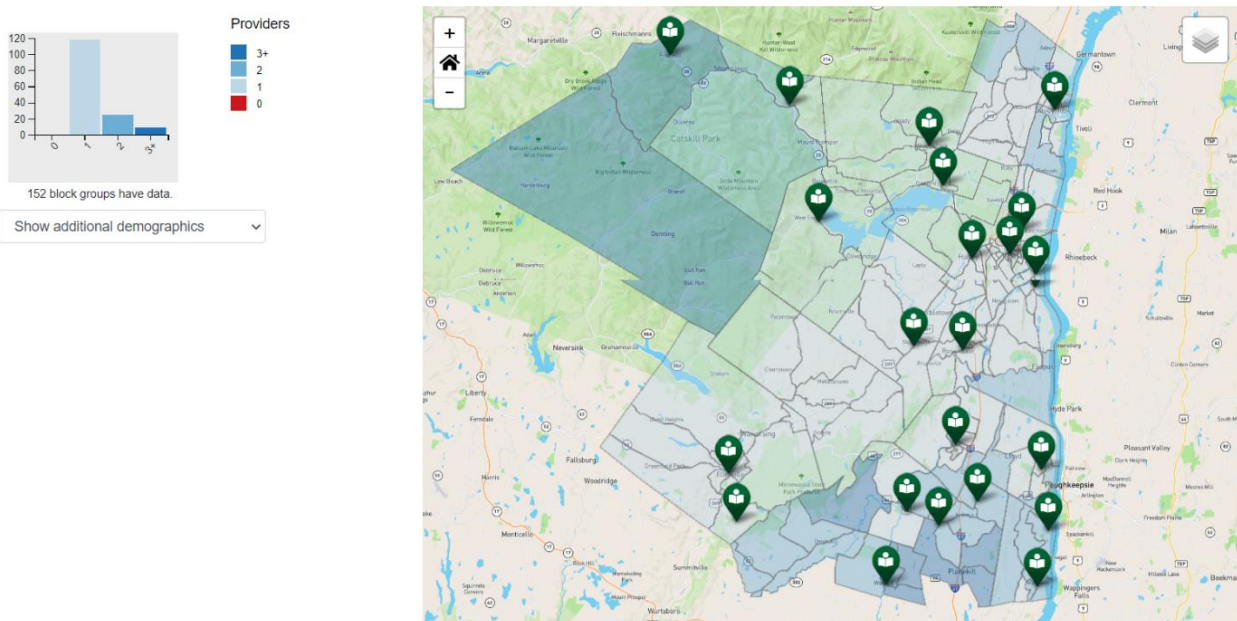
Ulster County

Wireline and Fixed-Wireless Providers in Ulster County

Provider	Tech	Block groups	(% of Block groups)	Max ↓	Max ↑	Total Block groups
Charter Communications Inc (View on map)	Cable	145	95.39%	940.0 Mbs	35.0 Mbs	152
Verizon New York Inc. (View on map)	DSL	143	94.08%	15.0 Mbs	1.0 Mbs	152
Cablevision (View on map)	Cable	22	14.47%	500.0 Mbs	35.0 Mbs	152
Frontier Communication of New York (View on map)	DSL	11	7.24%	115.0 Mbs	7.0 Mbs	152
Verizon New York Inc. (View on map)	Fiber	11	7.24%	940.0 Mbs	880.0 Mbs	152
MTC Cable (View on map)	Fiber	4	2.63%	200.0 Mbs	15.0 Mbs	152
CTC of New York Upstate (View on map)	DSL	2	1.32%	9.0 Mbs	1.0 Mbs	152
Margaretville Telephone Co Inc (View on map)	DSL	2	1.32%	6.0 Mbs	768.0 Kbs	152
Margaretville Telephone Co Inc (View on map)	Fiber	2	1.32%	200.0 Mbs	15.0 Mbs	152
MTC Cable (View on map)	DSL	2	1.32%	6.0 Mbs	768.0 Kbs	152
Consolidated Communications (View on map)	DSL	1	0.66%	50.0 Mbs	10.0 Mbs	152
Consolidated Communications (View on map)	Fiber	1	0.66%	1.0 Gbs	1.0 Gbs	152
Mid-Hudson CableVision (View on map)	Cable	1	0.66%	250.0 Mbs	25.0 Mbs	152
Mid-Hudson Data Corp. (View on map)	Fixed Wireless	1	0.66%	25.0 Mbs	4.0 Mbs	152
Rise Broadband (View on map)	Fixed Wireless	1	0.66%	50.0 Mbs	5.0 Mbs	152

Number of wireline (fixed) providers

[About the data...](#) 25|/3| or faster Satellite providers Home Block group



Source: <https://internet-is-infrastructure.org/>

Demographic Data: Ulster County

- 46% of children enrolled in public schools are eligible for free or reduced-price lunch in Ulster County.

Source: <https://www.countyhealthrankings.org/>

Key Demographics: Ulster County

Formatted CSV

	Ulster
Total population	178,665
Median household income	\$64,304 ± \$1,347
Population per sq/mi	159
Total households	69,320 ± 753
Average Household Size	2.41 ± 0.03
Households per sq/mi	62
Area (sq/mi)	1,124.2
Families in poverty	11.38% ± 1.07%
Proportion Persons of Color	15.48% ± 0.74%
Proportion Black or African American	6.03% ± 0.31%
Proportion Hispanic or Latino	10.21%
Proportion Native American	0.22%
Proportion of workers who work from home	7.95% ± 0.75%

Urban/Rural Divide

About the data... About Using the 2010 Census Blocks Assignments Formatted CSV

There are two sources of urban/rural block characterizations, and the FCC provides an estimate of population for each block. However the resulting data likely have large margins of error. All the same, this view, and the related view for [Well-Served Blocks](#) can provide a first-order approximation to the Urban/Rural divide in your community. Use your best judgement and read the cautionary notes when interpreting this data.

Census any Satellite providers Home Households Percentages

	Households	Households (%)	0	1	2	3+ Providers
Urban	38,219	52.5%	0.2%	3.1%	95.2%	1.4%
Rural	34,601	47.5%	0.3%	11.3%	83.4%	5.1%
Total	72,820		0.3%	7.0%	89.6%	3.2%

- The *Urban/Rural* selection is based on the US Census. Toggle the menu to choose which characterization is applied.
- Population data is drawn from the [FCC Staff Estimates](#) of population per block.

Source: <https://internet-is-infrastructure.org/>